

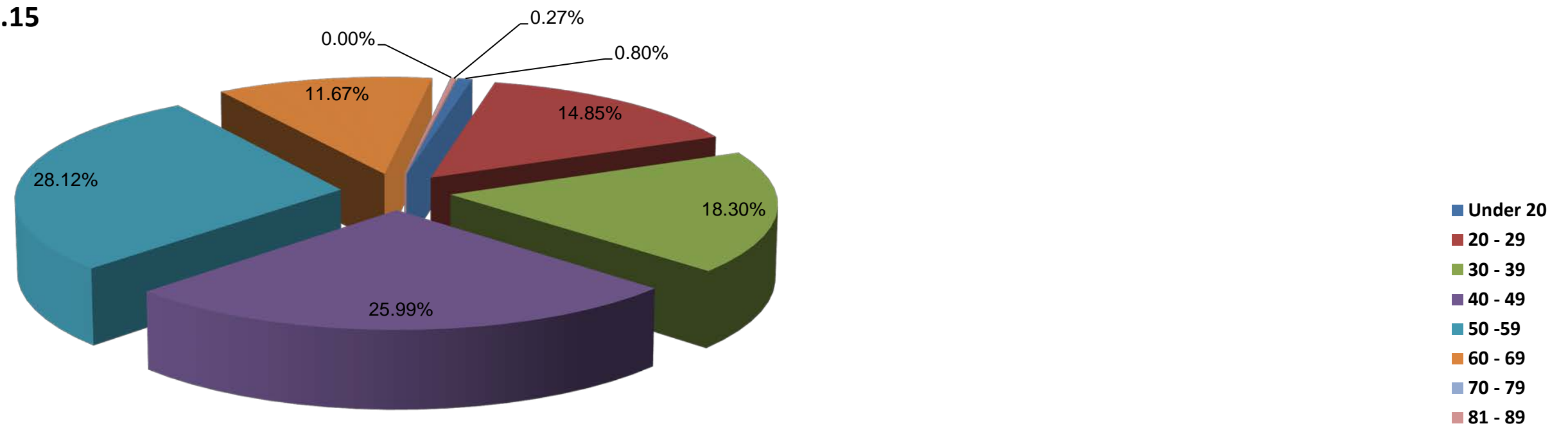
# Writtle College

## Employee Equality Diversity Data 2015

Writtle College Staff Profile by Age

Under 20	20 - 29	30 - 39	40 - 49	50 - 59	60 - 69	70 - 79	81 - 89
0.80%	14.85%	18.30%	25.99%	28.12%	11.67%	0.00%	0.27%

Age Profile of Staff as at 31.12.15



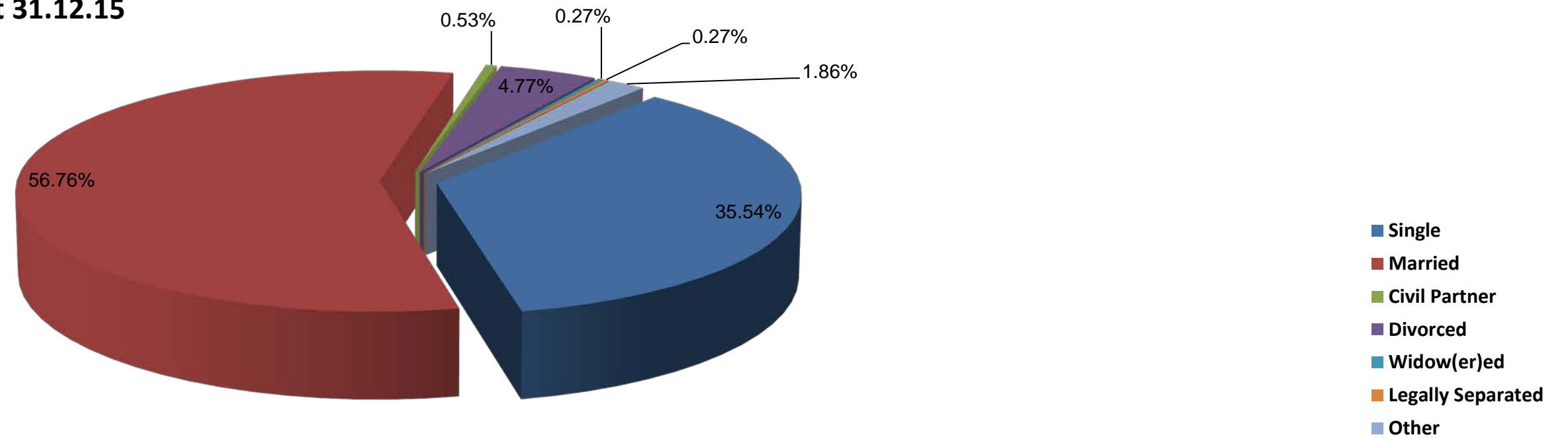
# Writtle College

## Employee Equality Diversity Data 2015

Writtle College Staff Profile by Marital Status

Single	Married	Civil Partner	Divorced	Widow(er)ed	Legally Separated	Other
35.54%	56.76%	0.53%	4.77%	0.27%	0.27%	1.86%

Martital Status Profile of Staff as at 31.12.15



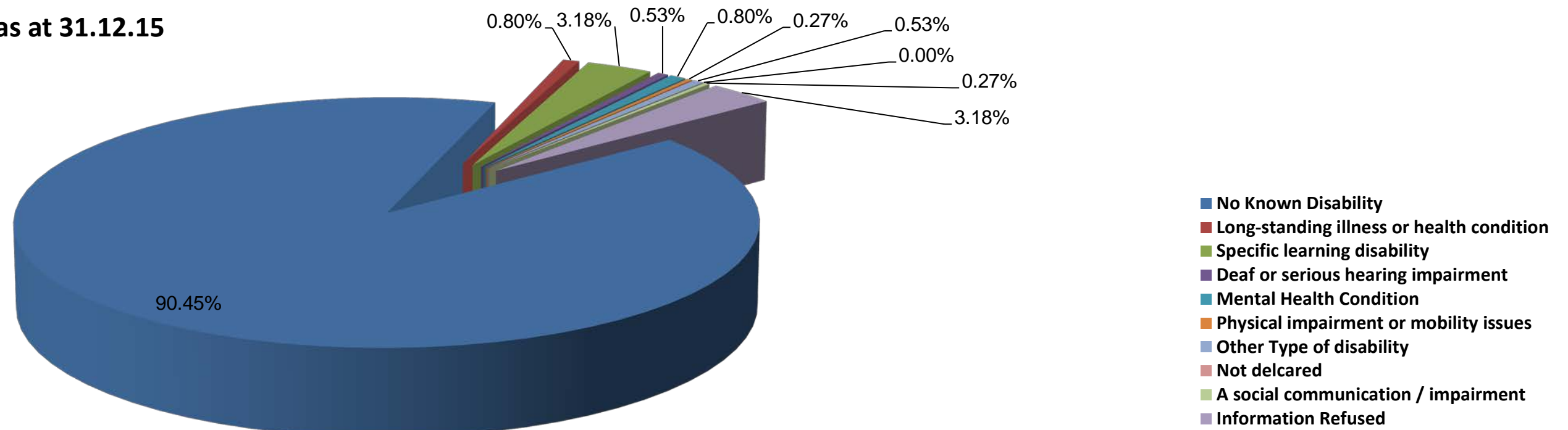
# Writtle College

## Employee Equality Diversity Data 2015

Writtle College Staff Profile by Disability

No Known Disability	Long-standing illness or health condition	Specific learning disability	Deaf or serious hearing impairment	Mental Health Condition	Physical impairment or mobility issues	Other Type of disability	Not delcared	A social communication / impairment	Information Refused
90.45%	0.80%	3.18%	0.53%	0.80%	0.27%	0.53%	0.00%	0.27%	3.18%

Disability Profile of Staff as at 31.12.15



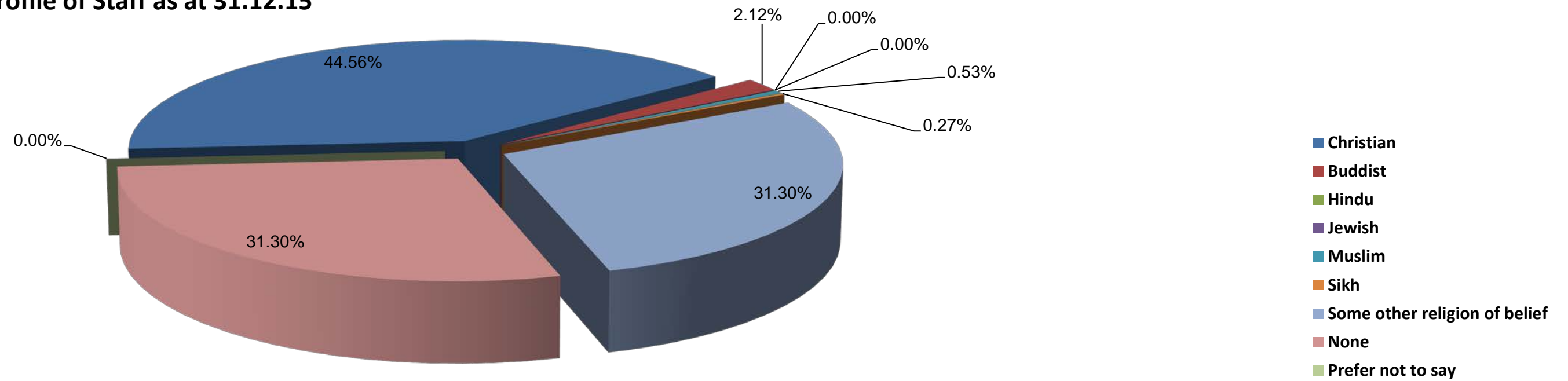
# Writtle College

## Employee Equality Diversity Data 2015

Writtle College Staff profile by Religion/Belief

Christian	Buddist	Hindu	Jewish	Muslim	Sikh	Some other religion of belief	None	Prefer not to say
44.56%	2.12%	0.00%	0.00%	0.53%	0.27%	31.30%	31.30%	0.00%

Religious Belief Profile of Staff as at 31.12.15



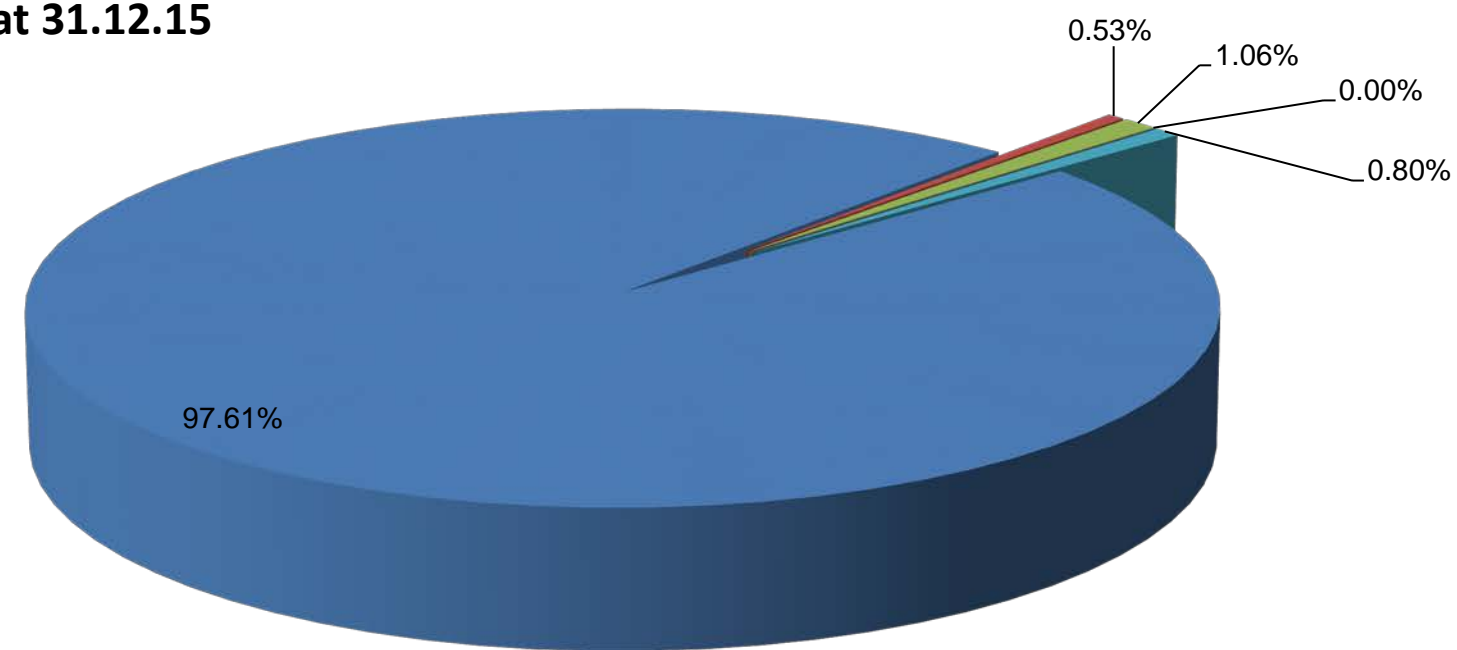
# Writtle College

## Employee Equality Diversity Data 2015

Writtle College Staff Profile by Ethnicity

White	Black or Black British	Asian or Asian British	Mixed Ethnic Background	Not Declared
97.61%	0.53%	1.06%	0.00%	0.80%

Ethnicity Profile of Staff as at 31.12.15



- White
- Black or Black British
- Asian or Asian British
- Mixed Ethnic Background
- Not Declared

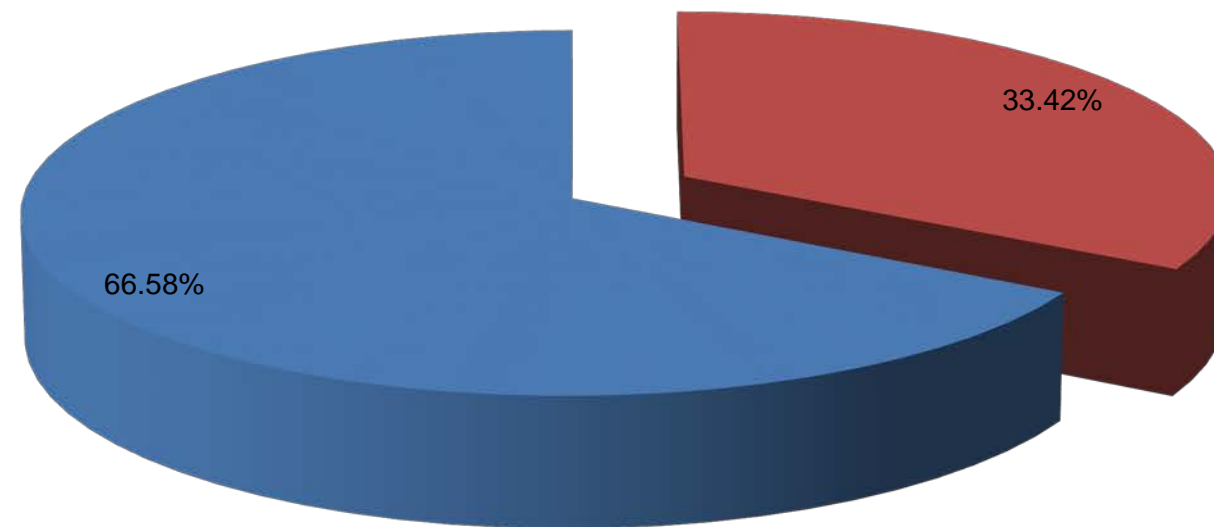
# Writtle College

## Employee Equality Diversity Data 2015

### Writtle College Staff profile by Gender

Female	Male
66.58%	33.42%

### Gender Profile of staff as at 31.12.15



■ Female  
■ Male

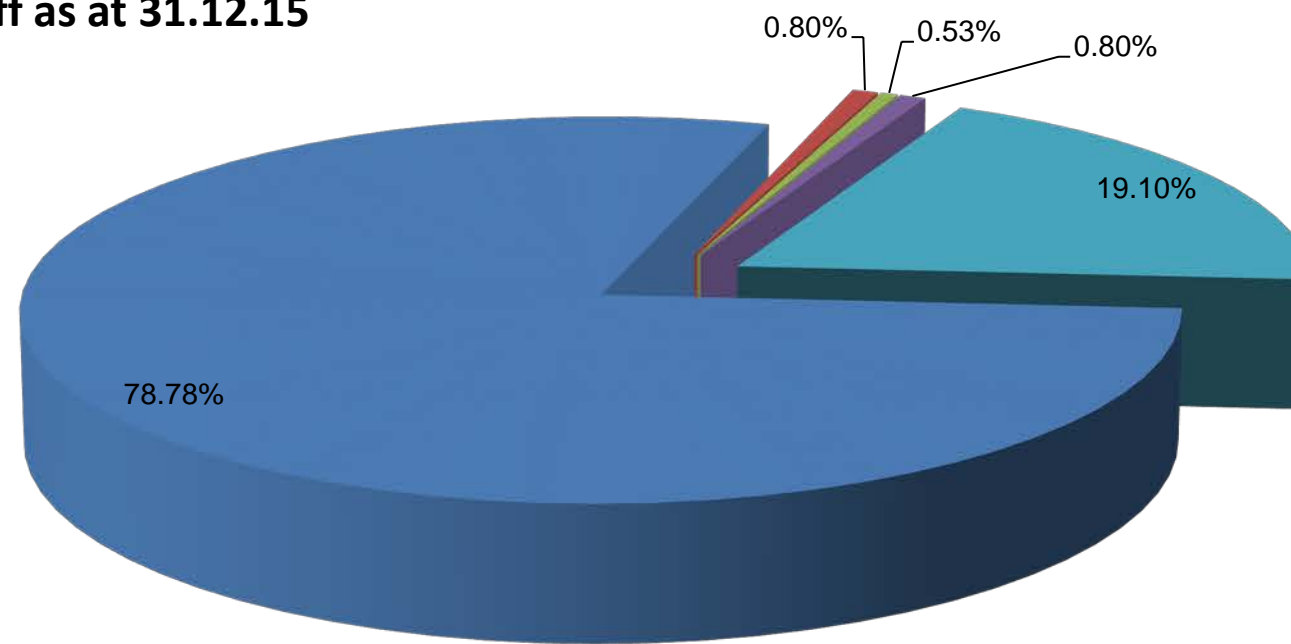
# Writtle College

## Employee Equality Diversity Data 2015

Writtle College Staff profile by Sexual Orientation

Heterosexual	Gay Man	Gay Woman	Bisexual	Information Refused
78.78%	0.80%	0.53%	0.80%	19.10%

Sexual Orientation Profile of staff as at 31.12.15



- Heterosexual
- Gay Man
- Gay Woman
- Bisexual
- Information Refused

NB - Data only recently being recorded