



# Writtle College

A partner of the University of Essex

## INTERNATIONAL PROSPECTUS







# Welcome to Writtle College

As one of the longest-established specialist land-based Colleges in the UK, we offer our international students an opportunity to study a range of high quality and inspirational academic programmes with Bachelors, Masters and Research Degrees.

Founded in 1893, Writtle College has valued and nurtured its international links and is held in high regard by related industries worldwide for providing highly skilled and knowledgeable students for their chosen sectors as well as being at the forefront of research and consultancy.

Our extensive portfolio of courses gives you the opportunity to study at Further Education or Higher Education levels, from Foundation and Honours degrees through to Masters and PhD research programmes. Among the subject choices are Equine, Veterinary Physiotherapy, Animal Science, Sport, Agriculture, Conservation, Sustainable Land Management, Horticulture, Professional Floristry, Art & Design, and Landscape Architecture & Garden Design. An overview of the main study areas is provided on the following pages along with profiles from our international student community on their Writtle experience.

We hope the information contained in this guide will provide you with a good overview of the opportunities at our prestigious College, which has all the benefits of a safe and beautiful campus setting and yet is close to all the amenities of the City of

Chelmsford and just a 35 minute train journey away from the heart of the UK's Capital, London.

Choosing the right course and place to study in the UK is so important for your future career. Our International Team and dedicated staff are here to help you make an informed choice. We can help you develop your English language skills, offer you a unique study environment and support you so that you gain the most from your time studying overseas. Contact our International Team at [international@writtle.ac.uk](mailto:international@writtle.ac.uk) or visit our website [www.writtle.ac.uk](http://www.writtle.ac.uk) and start your journey to join our specialist Higher Education College with a global track record of producing highly-skilled graduates in our specialist fields.

We really look forward to welcoming you as one of our international students.

**Dr Stephen Waite**  
**Principal**  
**Writtle College**

# Location

The College campus borders onto Writtle, which has all the charm of the English countryside including a picturesque village green, traditional pubs and historic houses, as well as convenience stores.

The campus is only a short bus ride or 35 minute walk from Chelmsford, the only city in Essex, which boasts an impressive cathedral (where Writtle Graduation Ceremonies are held), bustling shopping centres, parks and gardens, theatres, bars, leisure complex, and lively student nightlife. Chelmsford is just 35 minutes by train from London Liverpool Street and conveniently located for London international airports, with Stansted 30 minutes' drive away and Heathrow 120 minutes and Gatwick around 90 minutes away. London Southend airport, with routes to European destinations, is 30 minutes away.



# Contents

Why Writtle?.....	4
A personal approach .....	6
Being an international student .....	8
at Writtle College	
A home away from home.....	10
Global links.....	11
Research.....	12
<b>Design</b> .....	14
<b>Horticulture and Floristry</b> .....	16
<b>Equine and Animal Sciences,</b>	18
<b>Veterinary Physiotherapy</b>	
<b>and Sport</b>	
<b>Agriculture and Conservation</b> .....	20
A confident start to your studies .....	22
in the UK	
Specific entry requirements for .....	24
international students at	
Writtle College	
Finance and fees.....	26

Just 35 minutes from Central London





# Why Writtle?

**Connections** An influential network of government, business and industry leaders are formally associated with the College.

**Staff credentials** Respected and renowned Writtle staff undertake research of national and international significance and hold high profile roles in their sectors.

**Choice** The College portfolio includes Environmental, Land-based, Design, Animal, Equine, Sport and Veterinary related courses.

**Flexibility** Our range of short courses and 'associate' study options provide a wide range of choice alongside our full-time programmes.

**Highly rated** Writtle College was ranked highly in the Guardian League Tables for 2015 among specialist institutions and those offering Sports Science.

**History** Established in 1893, Writtle has a prestigious heritage.

**Awards** Multiple winner for exhibits at the prestigious annual Chelsea Flower Show and many other industry awards for our staff and students.

**Campus** Set in a 220 hectare estate with beautifully landscaped grounds and individually designed gardens, Writtle has an attractive campus and is an inspiring place to study.



*My interest in urban regeneration led me to study Landscape Architecture so I could design for people's living environments. Writtle College seemed the appropriate place to study because of its knowledgeable lecturers, nice campus in the English countryside and the conversion course to prepare for the Masters.*

**Haruka Kobayashi**  
Japan  
MA Landscape Architecture







**Alumni** Many of our former students are leaders in their fields and pioneers in environmental solutions, such as UK Farm Minister George Eustice.

**Global links** Students from around the globe are currently at Writtle and add to our richly diverse campus community.

**Farms** Writtle College farms commercially across arable and livestock.

**Ideal location** Just 35 minutes from London and with good access to international airports, Writtle combines the best of countryside-living with proximity to the Capital City.

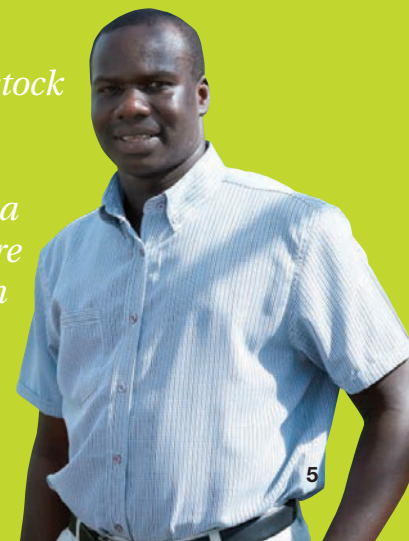
**Everyone welcome** Writtle welcomes students from all backgrounds, cultures and faiths. We actively encourage applications from students with disabilities.

**Facilities** Impressive facilities include the Titchmarsh Centre for Animal Studies, an Olympic-size indoor equine school, a Sports Science Centre and an on-site restaurant.

*“As a veterinarian working in Uganda, I faced lots of challenges from livestock diseases, so when I started to look for where I could do a course about animal production the place that was so appealing was Writtle College. The completion of my course has opened up doors, which I used to see as a dream. I am now a Regional Project Manager for the Food and Agriculture Organization of the United Nations and I attribute the very quick steps in my career to the completion of my course at Writtle College.”*

**Paul Opio**  
**Uganda**

**MSc Animal Production and Nutrition (now called Livestock Production Science)**  
**Recipient of the Marshal Papworth Scholarship from The East of England Agricultural Society**



# A personal approach

## Meet the international team

Writtle College has a dedicated team for international students, supporting you before you arrive and while you are studying here.

### International Marketing Officer

- Recruits international students from worldwide markets.
- Develops and implements new strategies to help Writtle achieve its international goals.
- Expands the worldwide agent network to boost recruitment.
- Develops long term sustainable partnership opportunities for the College.
- Ensures the College brand is rolled out worldwide through the development of key marketing materials.

### International Admissions and Compliance Officer

- Facilitates international applications from overseas applicants by supporting the admissions tutors and international team.
- Ensures compliance with UK Visas and Immigration (UKVI) requirements relating to international applicants from both a student and admissions perspective.

### International Student Advisor

- Offers support to all international students from their arrival at the College through to when they leave.
- Works with students on a range of issues relating to living, studying and working in the UK.

### English Language Coordinator

- Runs the Pre-sessional English Language (PSEL) and academic preparation courses for international students.
- Offers support classes throughout the academic cycle which can help international students meet the demands of Higher Education in the UK.

### Careers advice service

Our Careers Adviser will help you to achieve your long-term career aims as well as assisting you to find part-time employment in the local area.

If you have any queries please contact a member of the international team on [international@writtle.ac.uk](mailto:international@writtle.ac.uk)







### Students' Union

We have an active Students' Union, which organises special events throughout the year and arranges a weekly entertainment programme.

The SU also has a dedicated Academic Sabbatical Officer to support students with course-related concerns and general academic issues.

*“I came from a town just outside of Oslo to study at Writtle, because of the specialist equine course offering and to experience education in another country. My dyslexia has not been a problem and the College has been very supportive and helped to improve my spoken and written English.”*

**Marita Bakkerud**

**Norway**

**BSc (Hons) Equine Science with Equitation and Coaching**

Prospective students are always welcome at Writtle College. You can come on an individual visit or as part of a group. Please contact the International Team at **[international@writtle.ac.uk](mailto:international@writtle.ac.uk)** to make arrangements.

**Information about student support and life as a student in the UK is available from:**  
**[www.writtle.ac.uk/International-Student-Support](http://www.writtle.ac.uk/International-Student-Support)**

You may find these external websites useful:

- **[www.ukcisa.org.uk](http://www.ukcisa.org.uk)**
- **[www.ukstudentlife.com](http://www.ukstudentlife.com)**
- **[www.educationuk.org/UK](http://www.educationuk.org/UK)**
- **[www.gov.uk/tier-4-general-visa/overview](http://www.gov.uk/tier-4-general-visa/overview)**





# Being an international student at Writtle College



Hear it in their own words:  
Watch the international video at:



WrittleCollege







### Multi Faith Room

The Multi Faith Room is a welcoming space for faith group meetings and quiet contemplation. We have a diverse student and staff community representing both those who have particular beliefs and allegiances as well as those of no faith; all are welcome to make use of this room.

### Students' Union

One of the highlights of the social calendar at Writtle College is Freshers' Week which includes events dedicated to welcoming the new international students at the College, giving you the chance to meet others in the international community here as well as key members of staff and academics.

There is also a programme of social events for all students, including two formal balls a year, the Winter and Summer Balls. There are themed nights weekly, live bands and barbecues as well as RAG (Raise and Give) charity events.

### The Recreation Centre

The Recreation Centre is the social and sporting focus for the student community at Writtle College. All students are automatically enrolled as members and can use the College gym, squash courts and sports hall for free.

### College bar

Many of the social events at the College are held at The Baa, which is part of the Recreation Centre.

### Sports clubs

Writtle College is well represented in team sports, with teams regularly fulfilling fixtures. Sports clubs include athletics, badminton, equine, mixed hockey, men's rugby, ladies' rugby, men's football, men's futsal, netball and shooting.

### Societies

The SU helps students set up and run their own social societies, ranging from the Equine Society to the International Student Society.

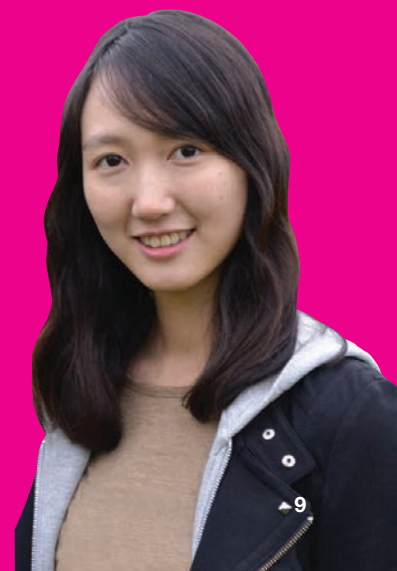
### Children's day nursery

As a student, you can benefit from subsidised childcare facilities on campus at the Kiddi Caru day nursery, which takes children from birth to five years. The nursery, graded 'outstanding' by Ofsted for the second time running in 2013, is purpose-built and has a team of qualified and highly experienced staff:

**[www.kiddicar.com](http://www.kiddicar.com)**

*"I looked at many colleges but I chose Writtle College because of its reputation, its beautiful surroundings and the standard of students' work. The College is a quiet and peaceful place and the lecturers are friendly and kind. The College has supported me in my move to the UK and the PSEL course helped me with my language skills; the sessions on essay writing techniques helped me to improve my research skills, especially Floristry technical terms."*

**Seeun Kim**  
**South Korea**  
**Foundation Degree Professional Floristry**





# A home away from home

## Accommodation

Writtle College has on-site accommodation for around 400 students, which creates a campus with a lively, community atmosphere.

Many students are keen to live on campus as it is easier to settle in and all the facilities – such as the launderette, restaurants and bar, sports centre, library and computer services – are close at hand.

Full details – including hall options and fees – can be found on the College website: **[www.writtle.ac.uk/accommodation](http://www.writtle.ac.uk/accommodation)**

## Key facts

- Contracts for Halls of Residence are for a full academic year (Sept-May), including the Christmas and Easter vacations. You can apply for an extended period, if necessary.
- All accommodation fees include a meal allowance (term-time).
- There are rooms specifically designed for students with disabilities.

- All rooms have free Internet access.
- Around half the rooms have private en-suite facilities. Other rooms have showers and toilets nearby and some have their own wash basin.
- All halls are non-smoking.
- All halls are mixed sex residences.
- Each hall has a common room/lounge area together with small snack kitchens.
- There is a launderette on campus with washing machines, tumble dryers and ironing facilities.
- There are on-site sport and recreational facilities including a bar, sports hall and gym.
- The halls are fitted with security locks on entrances and all bedrooms have a fitted safe. In addition, CCTV operates in some areas on campus.
- There is free parking and you will have use of a safe (batteries required).

## Off campus accommodation

For those who prefer to live off campus, the office can provide details of housing

websites for privately-owned lodgings, flats and shared houses in the area.

For further details and advice please contact:

## Accommodation

Tel: **+44 (0)1245 424212**

Email: **[accommodation@writtle.ac.uk](mailto:accommodation@writtle.ac.uk)**

## Catering

Meals, snacks and drinks are available from the self-service restaurant on campus, which spills out onto an outside terrace seating area and affords excellent views of the gardens.

There is an alternative catering outlet on campus, Thyme Out, which is open 8am to 8pm\*, Monday to Friday (term-time), as well as the Lordship Tea Room, which is owned by world-famous Tiptree jam makers Wilkin & Sons Ltd. The Watering Hole on the Cow Watering Campus – the equine centre at the College – is open Monday to Friday 10am to 1.30pm\*, serving light hot and cold snacks.

\*opening times may be subject to change



# Global links

Students and staff at Writtle College are involved in developing and maintaining links with other institutions from across the world. These links form an educational network that allows students and staff to spend time abroad and experience a different academic culture, whilst gaining an international perspective on their studies and research.

The movement of staff and specialists between Writtle College and international institutions makes for a dynamic and cosmopolitan atmosphere on campus.

**Writtle College has enjoyed links with a number of institutions including:**

- Andijan Agricultural Institute, Uzbekistan
- ATEI Thessaloniki, Greece
- Bila Tserka National Agrarian University, Ukraine
- Dalhousie University, Canada
- Eberswalde University for Sustainable Development, Germany
- Istanbul Technical University, Turkey
- Jiangsu Animal Husbandry and Veterinary College, China
- Jiangsu Polytechnic College of Agriculture and Forestry, China
- Justus-Liebig University, Giessen, Germany
- Kaywon School of Art and Design, South Korea
- Kyoto University, Japan
- Martin Luther University, Halle-Wittenberg, Germany
- Nihon University, Japan
- NODAI College, Tokyo
- Salahaddin University – Erbil, Kurdistan (Northern Iraq)
- Samarkand Agricultural Institute, Uzbekistan
- Seoul National University, South Korea
- Tashkent Institute of Irrigation and Melioration, Uzbekistan
- Tashkent State Agrarian University, Uzbekistan
- Technical University of Munich, Germany
- Termez State University, Uzbekistan
- The Lviv Institute of Management, Ukraine
- Universidade de Santiago de Compostela, Spain
- University of Almeria, Spain
- University of Applied Sciences, Weihenstephan-Triesdorf, Germany
- University of Duhok, Kurdistan (Northern Iraq)
- University of Sulaymaniyah, Kurdistan (Northern Iraq)



*"I chose Writtle because they offer a programme with a good balance between practical and traditional lectures, which suits my learning needs. The teachers are helpful and up to date on the latest research. Living on a nice campus also provides a great social life and easy access to lecture theatres, the Garden Room restaurant and the campus bar."*

**Anders Brevik Damm**  
Norway  
BSc (Hons) Animal Management



# Research

Research, innovation and development are hugely important in today's world. At Writtle College, we encourage you to be involved in research, which is especially important if you are considering a career in a research-led industry.

The College places great importance on collaborative research with external organisations, where sharing of resources and expertise can increase the value of the work. Consequently, there is an active liaison between the College and a number of universities and commercial companies, both in the UK and overseas.

Writtle College staff regularly contribute to peer-reviewed journals in relevant disciplines and publish with respected publishing houses. Staff present in national and international conferences – and encourage students to publish in journals and present their research in conferences too. In recent years, the College has been successful in obtaining funding for research from Research Councils and a range of commercial and independent sources.

## Postgraduate research

Writtle College offers the opportunity to study for postgraduate research degrees within the two academic schools at the College. Degrees are available at both Masters and Doctoral level.

### RESEARCH EXCELLENCE FRAMEWORK

75% OF OUR RESEARCH OUTPUT  
IN AGRICULTURE, VETERINARY  
AND FOOD SCIENCE WAS  
RATED TO BE OF AN  
INTERNATIONALLY  
RECOGNISED STANDARD  
IN THE REF 2014.



The College offers the following Research Degrees:

- Master of Science by Dissertation or Master of Arts by Dissertation
- Master of Philosophy (MPhil)
- Doctorate (PhD)

Research Degrees are offered in the following disciplines:

- Agriculture
- Animal Science
- Applied Biology
- Art and Design (MA by Dissertation only)
- Conservation Management (MSc by Dissertation only)
- Horticulture (including Postharvest Technology)
- Landscape Architecture (including Garden Design) (MPhil and PhD only)

To find out more, please contact:

**International Admissions**

Tel: +44 (0)1245 424200

Email: [international@writtle.ac.uk](mailto:international@writtle.ac.uk)







## The staff making the headlines...

### **Dr Sife Chikunya** **Senior Lecturer in Animal Science**

Featured on BBC Countryfile for his research into how essential oils can be used to reduce the saturated fat content of ruminant food products such as meat and milk, and methane emissions from the rumen.



### **Nieki van Veggel** **Lecturer in Animal Science**

Researching whether essential oil compounds can be used to create new antimicrobial meat packaging materials.



### **Dr Jonathan Amory** **Principal Lecturer in Animal Behaviour and Welfare**

Using wireless cow trackers to monitor the welfare of dairy herds.



### **Pryle Behrman** **Course Manager for Contemporary Art & Design**

Researching the crossovers between video art, experimental film and the art market; recently curated exhibitions at the National Galleries of Scotland and London Art Fair.



### **Dr Peter Hobson** **Reader in Biodiversity Conservation and Sustainability at Writtle College; Co-Director of the Centre for Ecnics and Ecosystem Management**

Research in Ecosystem thermodynamics and sustainability with particular reference to forests. "Ecnics" – applying ecosystem theory and close-to-nature science in adaptive management solutions for landscapes.



### **Dr Chris Bishop** **Reader in Postharvest Technology**

Undertaking postharvest research for a number of commercial companies and the UK's leading supermarkets.



### **Dr Anya Perera** **Head of School, Sustainable Environments and Design**

One of only 55 Higher Education staff across the country to be awarded a National Teaching Fellowship in 2014 – the most prestigious award for excellence in higher education teaching and support for learning.



### **Dr Jill Raggett** **Reader in Gardens and Designed Landscapes, Adjunct Professor at Dalhousie University, Canada**

Researching cultural borrowing in gardens and specialising in the Japanese-style garden in Britain and Ireland, lecturing on this and other topics internationally and working with many heritage organisations on the issues and challenges of restoring these gardens.



# Design

Writtle College is unique among specialist land-based colleges in establishing its own School of Design. Students are immersed in a design culture and are provided with an in-depth, applied understanding of professional practice and commercial awareness to complement their creative abilities and design training. Writtle design graduates have a proven track record in securing challenging and demanding positions within private companies and public organisations, with many students also successfully setting up their own businesses.

Please check our website for further course details:

**[www.writtle.ac.uk/Design](http://www.writtle.ac.uk/Design)**



*“I chose to study in the UK because it still has a great tradition of the garden. I compared many colleges’ courses. I was sure that Writtle was the best place to study garden design because of the lectures, which were oriented to garden and landscape culture, and the facilities looked great. The most critical factor was the environment of the College. Writtle College is really peaceful and in natural countryside – it is the best and most inspiring place to study gardens.*

*In Korea, it was difficult to introduce a new style of design process because of budget and time. Through the design studio module – I could examine my new ideas and I could get many new ideas from lecturers and friends.”*

**Joonkyu Lee**  
South Korea

**MA Garden Design, now studying a PhD Landscape Architecture**







## Courses

### Further Education

#### Art and Design

Level 3 Foundation Diploma Art and Design

Level 3 Extended Diploma Art and Design

### Undergraduate

#### Art and Design

BA (Hons) Contemporary Art and Design



### Landscape Architecture and Garden Design

BSc (Hons) Garden Design, Restoration and Management

BSc (Hons) Landscape and Garden Design

BSc (Hons) Landscape Architecture

FdSc Garden Design

Certificate of Higher Education Garden Design

### Postgraduate Taught

#### Landscape Architecture and Garden Design

MA Garden Design

MA Landscape Architecture

PG Diploma Landscape Architecture

PG Diploma Landscape Architecture

Conversion

### Sustainable Land Management under Global Change

MSc Sustainable Land Management under Global Change

### Research

#### Art and Design

MA by Dissertation Art & Design

### Landscape Architecture and Garden Design

PhD Landscape Architecture

MPhil Landscape Architecture

Accredited by:

**Landscape  
Institute**



BSc (Hons) Landscape Architecture and BSc (Hons) Landscape and Garden Design courses are accredited by the Landscape Institute and the International Federation of Landscape Architects – Europe (IFLA).

# Horticulture and Professional Floristry

Writtle College is one of the largest and best-known providers of horticultural education in the United Kingdom. Writtle has a wealth of outdoor and indoor resources which are used for teaching and learning including extensive gardens, a 220 hectare estate managed for crop production and conservation, sports fields, tropical and temperate glasshouses. The Postharvest Technology Unit (PHT Unit) supports Research Degrees and PhDs in Postharvest Technology, as well as delivering the only MSc programme in Postharvest Technology in Europe (source: [mastersportal.eu](http://mastersportal.eu)). Commercial trials and consultancy are also carried out by the PHT Unit in conjunction with some of the UK's major supermarkets.

The Floristry Department has exclusive use of four workshops located in its purpose-built unit where students learn practical skills which lead to jobs in retail, as Senior Floral Designers and freelance business opportunities.

Please check our website for further course details:  
**[www.writtle.ac.uk](http://www.writtle.ac.uk)**







## Courses

### Further Education

#### Horticulture

Level 3 Subsidiary Diploma Horticulture  
(leading to an Extended Diploma)

#### Floristry

Level 3 Diploma Floristry

### Undergraduate

#### Horticulture

BSc (Hons) Horticulture  
Certificate of Higher Education Horticulture

#### Floristry

BA (Hons) Professional Floristry (Top-up  
Year)  
FdA Professional Floristry  
Certificate of Higher Education  
Professional Floristry  
Certificate of Continuing Education in  
Professional Floristry

### Postgraduate Taught

#### Horticulture

MSc Horticulture  
MSc Horticulture (Crop Production)  
MSc Postharvest Technology  
PG Certificate Postharvest Technology

#### Sustainable Land Management under Global Change

MSc Sustainable Land Management under  
Global Change

### Research

PhD Horticulture (including Postharvest  
Technology)  
MPhil Horticulture (including Postharvest  
Technology)  
MSc by Dissertation Horticulture (including  
Postharvest Technology)

*“I focused more on the postharvest side of the course as it was an eye-catching module; everything was new to me and I found it really interesting. The module tutor was really inspiring, with lots of knowledge in research, and the course was also strongly linked to the industry with up-to-date information. I felt inspired and motivated.”*

*My current job as a Postharvest Technical Manager in a fresh produce packaging production company, takes me around the world. I get to meet growers, packers and retailers in different cultures and backgrounds, combining work with pleasure and also still learning a lot.”*

Irina Pop  
Romania  
MSc Horticulture – Crop Production



# Equine and Animal Sciences, Veterinary Physiotherapy and Sport

These courses combine the development of practical competence with commercial awareness and academic ability. Our high quality facilities supporting these courses include the Lordships Science Centre, with specialised laboratories and state-of-the-art technology; the Titchmarsh Centre for Animal Studies, with traditional and exotic species; the Equine Training and Development Centre; the Lordships Stud; a commercial farm; and the Sports Science Centre.

Please check our website for further course details: [www.writtle.ac.uk](http://www.writtle.ac.uk)

## Achieve your Veterinary Physiotherapy ambitions

Writtle College now offers a range of specialist Veterinary Physiotherapy courses, all accredited by the National Association of Veterinary Physiotherapists (NAVP). Our industry-experienced teaching staff, excellent learning facilities and attractive campus make us a very special place to study.

The MVetPhys in Veterinary Physiotherapy offered at the College is a four-year course that encompasses both undergraduate and postgraduate study, which then allows you to qualify as a Veterinary Physiotherapist. Find out more at [www.writtle.ac.uk/UG-Veterinary-Physiotherapy](http://www.writtle.ac.uk/UG-Veterinary-Physiotherapy)



*“As an international student from New Zealand, I was drawn to Writtle College because of the specific nature of the Equine Sports Therapy course – one of very few offered in the world. I felt at home at Writtle from my first day, with the friendly and rural environment and challenging scientific studies.”*

**Marie Jane Primrose**  
New Zealand  
BSc (Hons) Equine Sports Therapy





## Courses

### Further Education

#### Equine

Level 3 Extended Diploma in Horse Management  
Level 3 Subsidiary Diploma in Horse Management  
Level 3 Work-Based Diploma in Horse Care

#### Animal

Level 3 90 Credit Diploma Animal Management  
Level 3 Extended Diploma Animal Management  
Level 3 Certificate in Introductory Dog Grooming

#### Sport

Level 3 Extended Diploma Outdoor Adventure  
Level 3 Extended Diploma Sports (Performance & Excellence)

### Undergraduate

#### Equine

BSc (Hons) Equine Behaviour  
BSc (Hons) Equine Performance and Business Management  
BSc (Hons) Equine Sports Therapy and Rehabilitation  
Diploma of Higher Education Equine Behaviour  
Diploma of Higher Education Equine Performance and Business Management  
Diploma of Higher Education Equine Sports Therapy and Rehabilitation

#### Animal

BSc (Hons) Animal Science  
BSc (Hons) Animal Management  
Diploma of Higher Education in Animal Science  
Diploma of Higher Education in Animal Management  
Certificate of Higher Education in Animal Studies

#### Veterinary Physiotherapy

MVetPhys Veterinary Physiotherapy  
BSc (Hons) Animal Therapy

#### Bioveterinary Science (in green)

MSci Bioveterinary Science\*  
BSc (Hons) Bioveterinary Science\*  
(\*2017 intake, subject to validation)

#### Sport

BSc (Hons) Sports and Exercise Performance  
FdSc Cycling Performance  
Diploma of Higher Education Sports and Exercise Performance

### Postgraduate

#### Taught

#### Animal

MSc Animal Welfare and Conservation  
MSc Livestock Production Science

#### Research

Please see  
[www.writtle.ac.uk/Research-Areas](http://www.writtle.ac.uk/Research-Areas)  
for Research Areas available

*“The teachers on the Pre-sessional English Language (PSEL) course have helped me with my spoken and written English, which has prepared me for the assignments and presentations I will need to do on my academic course. I have learnt a lot of information to help me to speak English fluently. It is good to study the PSEL here as you get to know the campus before starting your academic course.”*

**Aram Mohammed Ahmed**  
Kurdistan region of Iraq  
MSc Animal Welfare and Conservation







# Agriculture and Conservation

By studying an Agriculture or Conservation course at Writtle College, you will be contributing to the future of the world as the human race faces the challenges of the 21st Century. With populations increasing globally, there is a greater focus on food production, sustainability and the safeguarding of our natural environments.

Developed in close association with employers, these courses are designed to produce graduates with a sound understanding of the agricultural industry or conservation sector, as well as technical and practical expertise.

Both programmes use the College's estate, which encompasses a variety of habitats and rare species as well as a commercial farm, for teaching and research. Academic staff have wide-ranging experience of the sectors and are involved in high-profile research in the UK and internationally.

Please check our website for further course details: **[www.writtle.ac.uk](http://www.writtle.ac.uk)**







## Courses

### Further Education

#### Agriculture

Level 3 Subsidiary Diploma Agriculture  
(leading to an Extended Diploma)

#### Countryside

Level 3 Subsidiary Diploma Countryside  
Management (leading to an Extended  
Diploma)

### Undergraduate

#### Agriculture

BSc (Hons) Agriculture  
BSc (Hons) Agriculture (Arable Crop  
Management)  
BSc (Hons) Agriculture (Farm Livestock  
Production)  
BSc (Hons) Agriculture (Sustainable  
Environments)  
Diploma of Higher Education in Agriculture  
Diploma of Higher Education in Agriculture

(Arable Crop Management)  
Diploma of Higher Education in Agriculture  
(Farm Livestock Production)  
Diploma of Higher Education in Agriculture  
(Sustainable Environments)  
Certificate of Higher Education in  
Agriculture

#### Conservation

BSc (Hons) Conservation and Environment  
FdSc Conservation Management  
Diploma of Higher Education Conservation  
and Environment  
Certificate of Higher Education  
Conservation Management  
Certificate of Higher Education  
Conservation and Environment  
Certificate of Continuing Education in  
Conservation Management

### Postgraduate Taught

#### Conservation Management

MSc Sustainable Land Management under  
Global Change

### Research

#### Agriculture

PhD Agriculture  
MPhil Agriculture  
MSc by Dissertation Agriculture

#### Conservation

MSc by Dissertation Conservation  
Management

*“I came from Hokkaido, northern Japan, to study my Bachelor’s Degree at Writtle. Having spent time in Australia on an exchange during my high school years, I gained an interest in western culture so studying in the UK was a natural choice when I had to think about my university level education.*

*My family own a farm back at home and we grow seed potatoes, rice, wheat and other crops. I’ve learnt a lot from the course, which I will take back with me and use. There are lots of international students on my course from different countries and sharing experiences and practice has been really useful to me.*”

**Rikiya Ueno**  
Japan  
BSc (Hons) Agricultural Business  
Management (Crop Production)



Our BSc (Hons) Conservation and Environment is accredited by the Chartered Institute of Ecology and Environmental Management.



# A confident start to your studies in the UK

Writtle College is committed to supporting you as you prepare for higher study.





Our English courses are designed to build your confidence and skills so you can successfully start your studies in UK Higher Education. Our well-qualified and dedicated teaching staff are experienced in raising standards of English with students from many different nations and backgrounds.

### Pre-sessional English Language (PSEL) courses

#### Our courses offer:

- General English language skills.
- English and study skills for academic purposes.
- IELTS preparation techniques.
- Introduction to UK teaching styles.
- Use of College computing, library, sport and recreational facilities.
- Visits programme.
- Orientation to living in the UK and British culture.

The College offers four levels of PSEL courses, ranging from six weeks in duration to 24 weeks, and can offer an accommodation package to students.

For further information about this year's courses, including dates and prices, please visit:

**[www.writtle.ac.uk/efl](http://www.writtle.ac.uk/efl)**

The PSEL course leaflet and application form is available at:

**[www.writtle.ac.uk/international-courses](http://www.writtle.ac.uk/international-courses)**

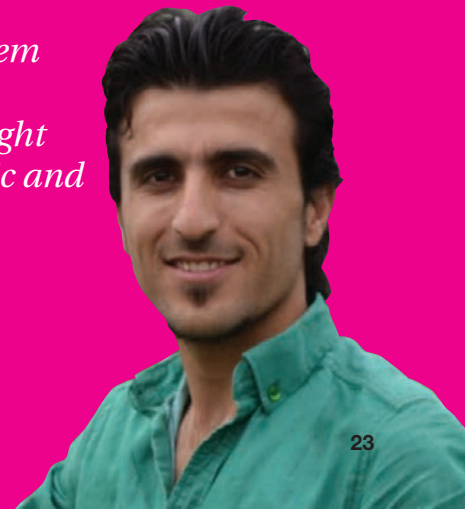
### Free English classes

English support is also offered to international students whose first language is not English. In-sessional English courses are free and help with skills such as assignment writing and general English language and culture. Individual tutorial support is also available as required.

For more information, visit **[www.writtle.ac.uk](http://www.writtle.ac.uk)**

*“The PSEL course taught me how to do presentations so I could stand in front of students and speak in a different language for the first time. This was great experience and I had no problem presenting my subjects during my academic course. The PSEL also taught me the differences between academic and informal writing.”*

**Arshad Yaseen**  
Kurdistan region of Iraq  
MSc Horticulture (Crop Production)



# Specific entry requirements for international students at Writtle College

You should aim to make your application as early as possible. This allows good time for completion of visa formalities.

You can find an international student application form in the centre of this Guide or download one from our website.

You will be asked to submit documents directly via email or through your chosen representative.

For more information on procedures, please visit:  
**[www.writtle.ac.uk/international-applications](http://www.writtle.ac.uk/international-applications)**

## Visas

As a non-EEA student you will need a visa to study at Writtle College. The Tier 4 (General) category is for adult students who want to come to, or remain in, the UK for their post-16 education. If you successfully receive an offer to study at Writtle College, you must return the acceptance forms, providing evidence that you have met any conditions (if applicable) and pay your deposit. You can then be issued with a Confirmation of Acceptance for Studies (CAS). This is now the only route to gaining a Tier 4 student visa.

For up-to-date guidance and an application form, please visit  
**[www.gov.uk/tier-4-general-visa](http://www.gov.uk/tier-4-general-visa)**

Sponsor Licence Number: 4TJPFDP34.

## English language requirements

If you do not have English as a first language, you will normally be required to demonstrate an IELTS overall score (or equivalent) of:

- 5.5 with a minimum of 5.0 in all elements for a Further Education course
- 5.5 with a minimum of 5.0 in all elements for a Foundation degree, Higher Certificate or Higher Diploma
- 6.0 with a minimum of 5.5 in all elements for a degree
- 6.5 with a minimum of 5.5 in all elements for a postgraduate degree

If you have lower scores, you may be accepted onto a Pre-sessional English Language course, which can lead to entry to the appropriate programme of study. Please see **[www.writtle.ac.uk/EFL](http://www.writtle.ac.uk/EFL)** for more details.







*I am very satisfied with my course. The teachers are engaged and love their subjects, you get a lot of individual help and there is a good combination of design and theory. To have your own work space in a studio from year one is also a big plus.*

Anne Bergsland  
Norway  
BSc (Hons)  
Landscape  
Architecture







*Writtle College is famous for its Floristry courses and it has a good curriculum. I was able to practise a variety of British styles of flower design and gain work experience in Neill Strain Floral Couture, a famous florist in Belgravia, London.*

**Miyeong Jeon**  
South Korea  
Level 3 Diploma in  
Floristry



## Finance and fees

For the most up-to-date information regarding Writtle College tuition fees for international students, please check our website **[www.writtle.ac.uk/international-fees](http://www.writtle.ac.uk/international-fees)**.

All international students are required to pay a tuition fee deposit upon receiving the offer of a place at Writtle College. The first instalment will need to be paid before enrolment, with the remainder to be paid before the Christmas vacation.



Moses meeting HRH The Duchess of Cornwall at the College

*I chose to study at Writtle College because of the outstanding land-based agriculture and technology courses and because there is a big international atmosphere and international student support. I would also recommend Writtle College for the ease of the application process.*

**Moses Biketi**  
Kenya  
MSc Postharvest Technology





Scholarships

There are scholarships and bursaries available to students, including some which are specifically for international students.

Award Name	Award Duration	Total Award Value	Yearly Award Value
UG International Scholarship (WCIS)	Standard length of course – 3 years	£3,000	£1,000
PG International Scholarship (WCIS)	Standard length of course – 1 year	£1,500	£1,500

Please visit [www.writtle.ac.uk/HE-Scholarships-&-Bursaries-16-17](http://www.writtle.ac.uk/HE-Scholarships-&-Bursaries-16-17) for more information on checking your eligibility and how to apply.



# Writtle




## College

A partner of the University of Essex



Watch our International video at  WrittleCollege

Contact us at  
**international@writtle.ac.uk**  
or see us at **www.writtle.ac.uk**  
Writtle College  
Lordship Road  
Chelmsford  
CM1 3RR  
Tel: **+44 (0)1245 424200**  
Fax: **+44 (0)1245 420456**

 writtlecollege  
 @writtlecollege  
 writtlecollege  
 WrittleCollege  
 +writtlecollege  
 writtlecollege.blogspot.co.uk

Further information:

**FE prospectus**  
**UG prospectus**  
**PG prospectus**

Available to download  
from our website or  
contact Admissions on  
**+44 (0)1245 424200**

