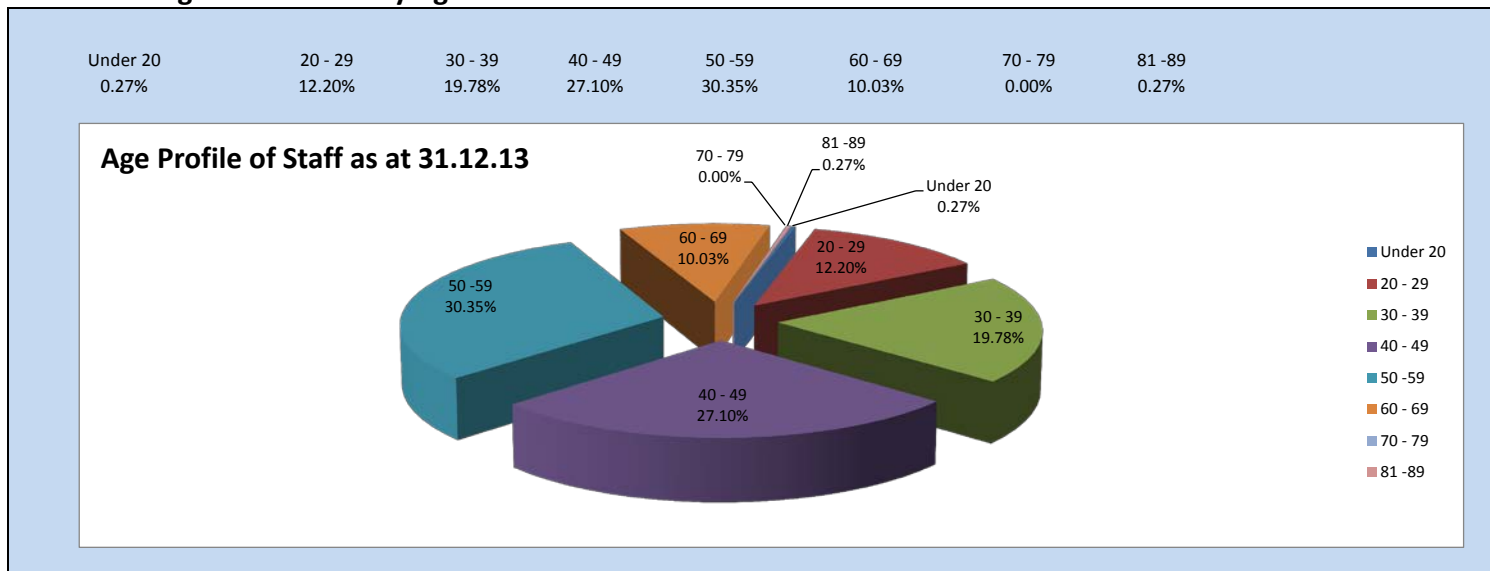
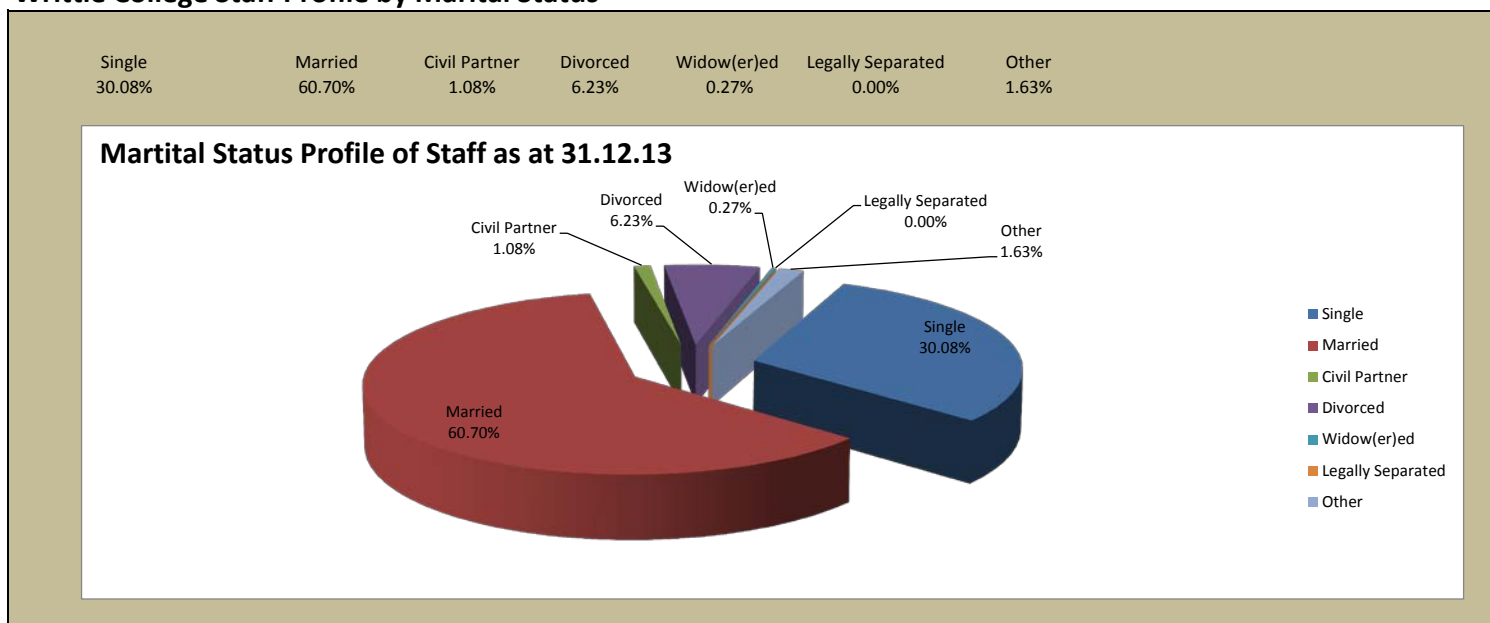


Writtle College Staff Profile by Age



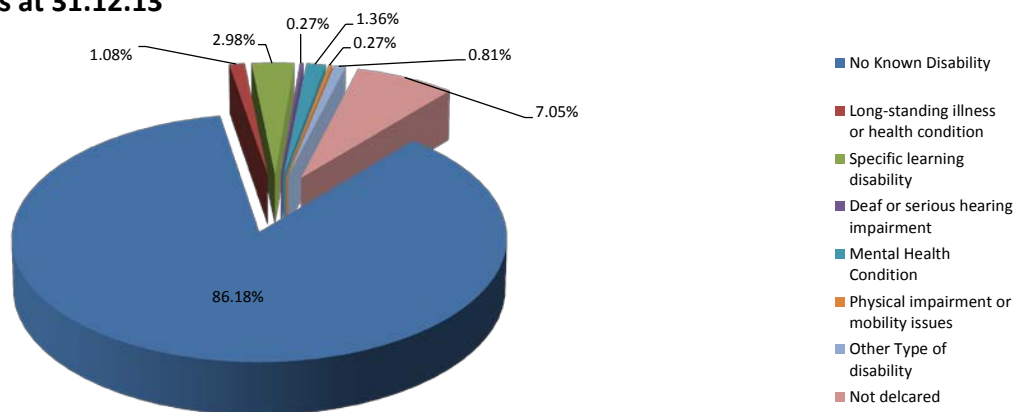
Writtle College Staff Profile by Marital Status



Writtle College Staff Profile by Disability

No Known Disability	Long-standing illness or health condition	Specific learning disability	Deaf or serious hearing impairment	Mental Health Condition	Physical impairment or mobility issues	Other Type of disability	Not declared
86.18%	1.08%	2.98%	0.27%	1.36%	0.27%	0.81%	7.05%

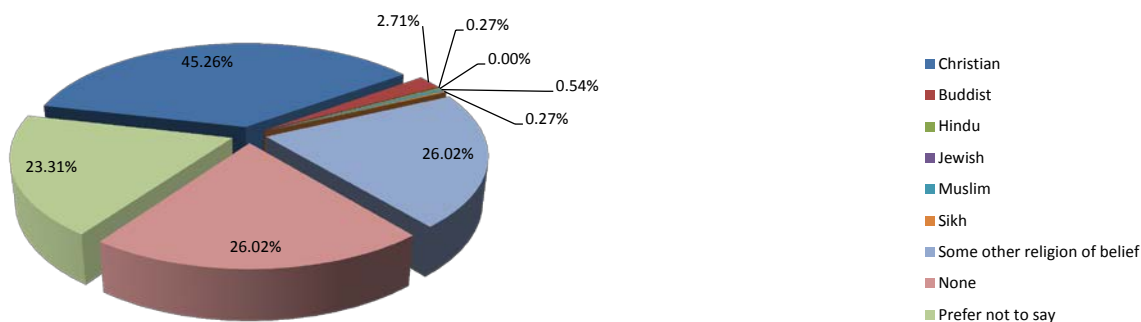
Disability Profile of Staff as at 31.12.13



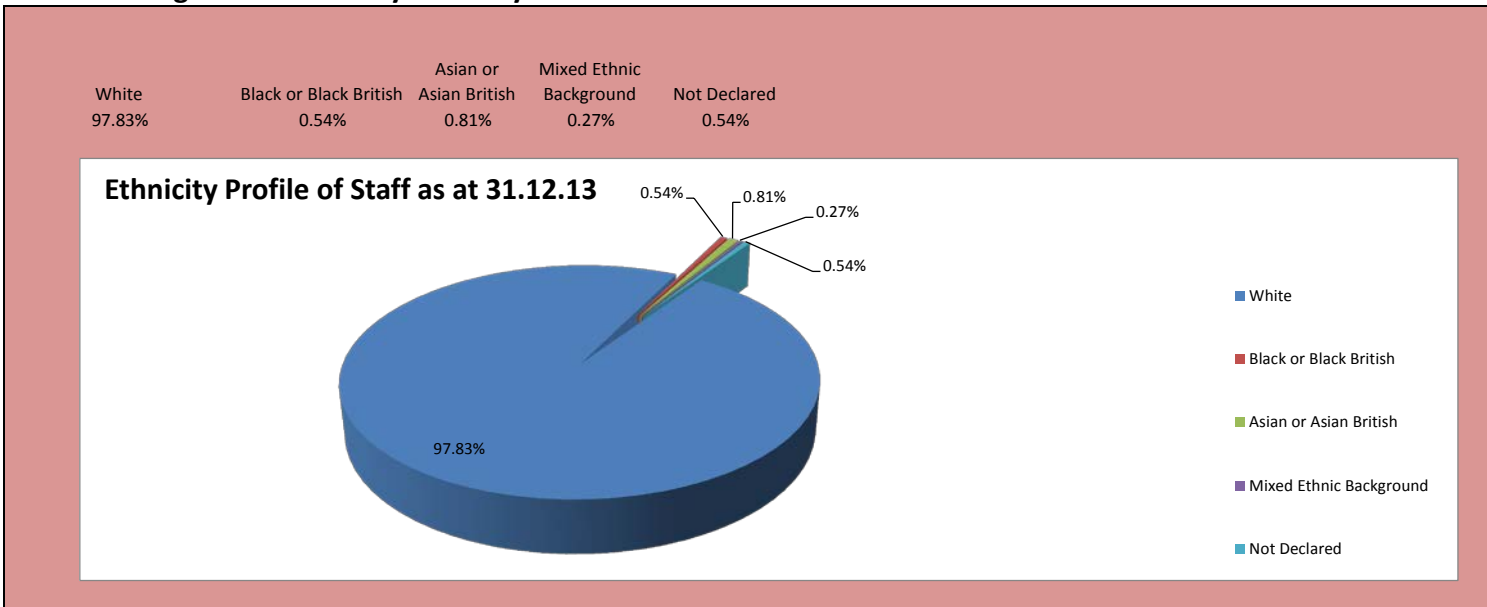
Writtle College Staff profile by Religion/Belief

Christian	Buddhist	Hindu	Jewish	Muslim	Sikh	Some other religion of belief	None	Prefer not to say
45.26%	2.71%	0.27%	0.00%	0.54%	0.27%	26.02%	26.02%	23.31%

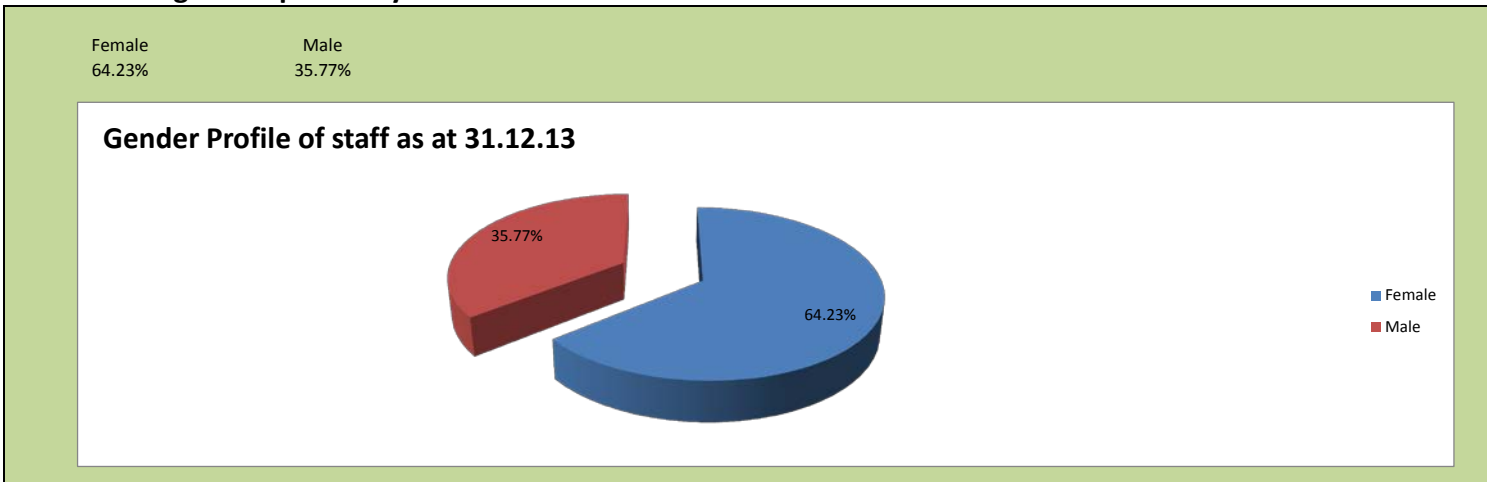
Religious Belief Profile of Staff as at 31.12.13



Writtle College Staff Profile by Ethnicity



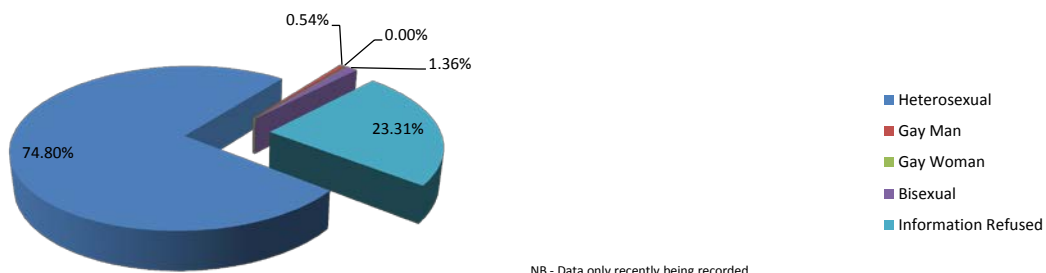
Writtle College Staff profile by Gender



Writtle College Staff profile by Sexual Orientation

Heterosexual	Gay Man	Gay Woman	Bisexual	Information Refused
74.80%	0.54%	0.00%	1.36%	23.31%

Sexuality Profile of staff as at 31.12.13



NB - Data only recently being recorded